

MARY, STAR OF THE SEA OF THE SEA

COVID-19 RETURN TO SCHOOL PROTOCOL

TABLE OF CONTENTS



CONTENTS



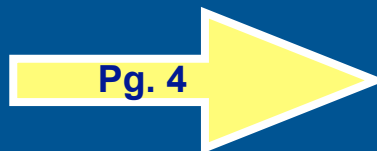
SCENARIO 1.
WHAT IF MY CHILD FEELS SICK?



DEFINITIONS
FOR SCENARIO 1



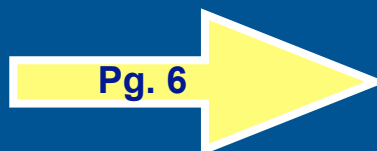
SCENARIO 2.
WHAT IF SOMEONE IN OUR
HOUSE TESTS POSITIVE FOR
COVID-19?



SCENARIO 3.
WHAT IF MY CHILD IS
IDENTIFIED AS A CLOSE
CONTACT FOR COVID-19?



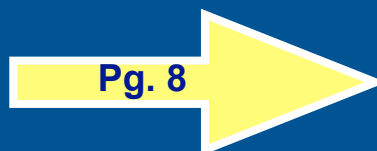
DEFINITIONS
FOR SCENARIO 3



SCENARIO 4.
WHAT IF THERE IS A
COVID-19 POSITIVE
CASE IDENTIFIED IN MY
CHILDS HOMEROOM



DEFINITIONS
FOR SCENARIO 4 & 5



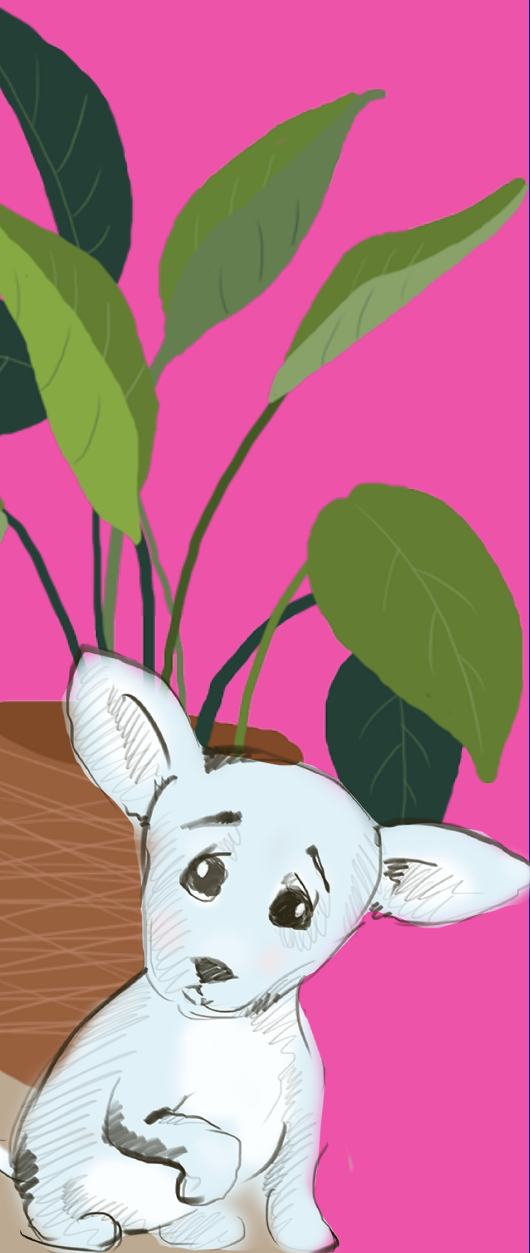
SCENARIO 5.
WHAT IF MY CHILD
WILL BE TRAVELING
OUT OF STATE?



SCENARIO 6.
WHAT IF MY CHILD TESTS
POSITIVE FOR COVID-19?

WHAT IF MY CHILD FEELS SICK?

SCENARIO 1.



YOUR CHILD HAS DEVELOPED SYMPTOM(S) AND THERE IS NO KNOWN EXPOSURE TO COVID-19. REGARDLESS OF VACCINE STATUS OR HISTORY OF COVID POSITIVE.

**Keep your child at home for the day. If your child develops symptom(s) at school parents will be contacted and your child must be picked up immediately.*

★ Your child has 1 low risk symptom.

1 Your child may return to school the following day with complete symptom resolution & afebrile without the use of medications. No test or doctor note required for return to school.

★ Your child has 2 or more low risk symptoms, or 1 or more high risk symptoms. Your child may return with one of the following options below.

1 Your child may return to school with a doctor's clearance. Must also be 24 hours fever and symptom free without the use of medications.

Or

2 Your child may return to school with a negative COVID-19 PCR test result. Test must be taken after 24 hours from presenting symptoms. Must also be 24 hours fever and symptom free without the use of medications.

Or

3 Your child may return to school with at least 24 hours symptom free without the use of medications. Must report to the health room before going to class for up to the next 2 school days for symptom check & to receive school administered antigen testing. (Parent permission required.)

DEFINITIONS FOR SCENARIO 1

LOW RISK SYMPTOMS: Runny nose, congestion, muscle/body aches, headache, unusual fatigue, nausea, stomachache, rash, temp of 99.5-100.3 for >15 minutes or longer, chills.

HIGH RISK SYMPTOMS: Cough, difficulty breathing, fever >100.4, sore throat, loss of taste / smell, diarrhea, vomiting.

School antigen testing & symptom(s) check. Contact school health room to determine & schedule test dates.

1. Report to the health room upon arriving to campus by 7:30am prior to going to class.
2. School nurse will do a symptom check.
3. Child will be given an Antigen quick test. (15 minute result)
4. Child will be cleared to go to class with a negative test result.
5. Child will provide teacher their clearance pass from the health room for admission to class.

★ *Permission form: Parent must complete school antigen testing permission form for child to take part in COVID-19 antigen testing. Link located on beehively.com home page and Mary, Star of the Sea website.*

★ *If your child receives a positive test result: Parent/guardian will be notified and must pick up child from school immediately. See (Pg. 9) for return to school instructions.*

★ *Sibling(s) of confirmed positive student attending MSOS: Must go home. See Scenario 2 for Further instructions. (Pg.3)*

WHAT IF SOMEONE IN OUR HOUSE TESTS POSITIVE FOR COVID-19?

SCENARIO 2.



EXPOSURE TO A HOUSEHOLD MEMBER WHO TESTED POSITIVE FOR COVID-19 LIVING IN THE SAME HOUSEHOLD AS YOUR CHILD REGARDLESS OF VACCINE STATUS.

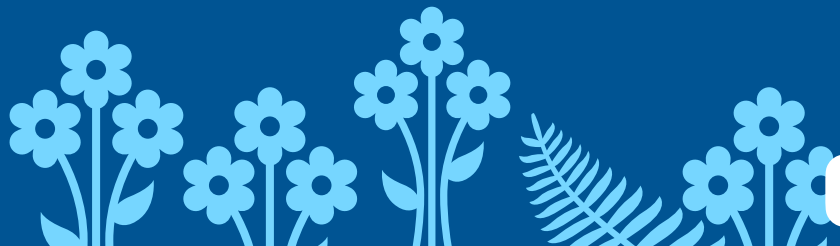
★ Keep student home (regardless of vaccine status) and notify the Principal and or school nurse 808.734.0208

1 Your child may return to school with a negative COVID-19 PCR test result. Test must be taken after 5 days following the date of positive exposure even if no symptoms are present. (Day of last contact is day 0.)

Or

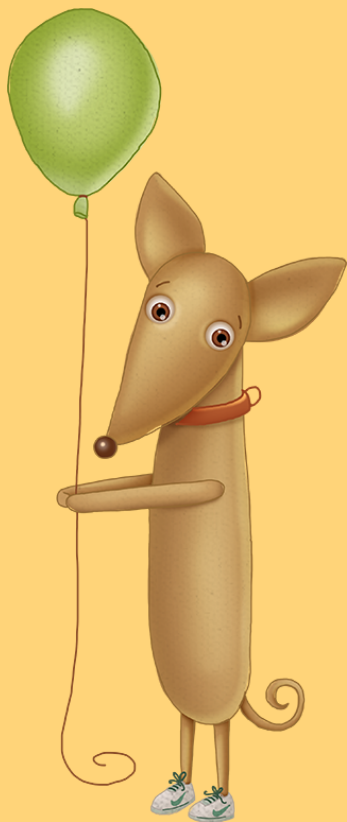
2 Your child may return to school following a 10 day quarantine from the positive test date. No test is required.

Exposure: Contact with someone with SARS-CoV-2; the virus that causes COVID-19 in a way that increases the likelihood of getting infected with the virus. (Such as a positive case who lives in the same household.)



WHAT IF MY CHILD IS IDENTIFIED AS A CLOSE CONTACT FOR COVID-19?

SCENARIO 3.



YOUR CHILD HAS BEEN IDENTIFIED AS A COVID-19 POSITIVE CLOSE CONTACT.

★ **Unvaccinated Students:**
Keep student home and notify the Principal and or school Nurse 808.734.0208.

1 Your child may return to school on the 5th day following the date of close contact. Must report to the health room before going to class for symptom check & to receive school administered antigen test. Contact the health room to determine test date's.

Or

2 Your child may return to school with a negative COVID-19 PCR test result. Test must be taken after 5 days following date of close contact.

Or

3 Student may return to school following a 10 day quarantine no test is required.

★ **Students who have received their primary vaccine series:**

1 Stay in school and take part in the **MSOS Test-To-Stay program**. Students will be given 2 or more rapid antigen tests in a 5 day period while continuing to attend school following the date of last contact.

Or

2 Your child may return to school with a negative COVID-19 PCR test result. Test must be taken after 5 days following date of close contact.

Or

3 Student may return to school following a 10 day quarantine no test is required.

DEFINITIONS FOR SCENARIO 3

School antigen testing & symptom(s) check. Contact school health room to determine & schedule test date's:

1. Report to the health room upon arriving to campus at 7:30am prior to going to class.
2. School nurse will do a symptom check.
3. Child will be given an Antigen quick test. (15 minute result)
4. Child will be cleared to go to class with a negative test result.
5. Child will provide teacher their clearance pass from the health room for admission to class.

★ **Permission form:** Parent must complete school antigen testing permission form for child to take part in COVID-19 antigen testing. Link located on [beehively.com](https://www.beehively.com) home page and Mary, Star of the Sea website.

★ **If your child receives a positive test result:** Parent/guardian will be notified and must pick up child from school immediately. See (Pg. 9) for return to school instructions.

★ **Sibling(s) of affected student attending MSOS:** Must go home. See Scenario 2 for Further instructions. (Pg.3)

Primary vaccine series: 2-dose series of an mRNA COVID-19 vaccine (Pfizer-BioNTech and Moderna) or a single dose of Janssen vaccine. Currently Pfizer-BioNTech primary series is the only FDA-approved vaccine for children ages 5–17.

Close contact: Being within 6 feet of a person with COVID-19 infection for a combined total of 15 minutes or more over a 24-hour period (regardless of mask use). Potential exposure period begins 48 hours prior to the start of the confirmed case's symptoms, or if they are asymptomatic; 48 hours prior to the date their test specimen was collected.

Close contact example: Your child attended a party over the weekend. A day later you are notified that the birthday child at the party has just tested positive for COVID-19. You are aware that your child was playing closely with this child at the party for over a 15 minute period. Monitor your child for symptoms and notify the school of Close contact.

WHAT IF THERE IS A COVID-19 POSITIVE CASE IDENTIFIED IN MY CHILDS HOMEROOM CLASS?

SCENARIO 4.



A POSITIVE COVID-19 CASE HAS BEEN IDENTIFIED IN THE SAME HOMEROOM BUBBLE.

★ Students may:

1 Stay in school and take part in the **MSOS Test-To-Stay program**. Students will be given 2 or more rapid antigen tests in a 5 day period while continuing to attend school following the date of last contact.

OR

2 Quarantine from school for 5 days from last contact & provide a PCR test taken on the 5th day from the date of last contact to return to school on the 6th day. (Day of last contact is day 0)

OR

3 Return to school after a 10 day Quarantine no COVID-19 test is required.

★ If COVID-19 related symptom(s) develop while your child is taking part in the TTS program you will be asked to pick up your child from school.

1 Your child may return to school after two calendar days and the last 24 hours must also be symptom free without the use of medications. Must provide a negative PCR test taken 24 hours after symptoms developed. A negative test result must be provided for return to school.

OR

2 Return to school after a 10 day Quarantine no COVID-19 test is required.

DEFINITIONS FOR SCENARIO 4 & 5

Test-To-Stay (TTS): Test-To-Stay allows, asymptomatic students who have been exposed to a COVID-19 positive case in the school setting to remain in school as long as they test negative for COVID-19 and remain symptom free.

Students will be administered 2 COVID-19 rapid tests over a 5 day period. Parents will be notified of the test dates that their child must report to health room.

1. Report to the health room by 7:30am before going to class.
2. School nurse will do a symptom check.
3. Child will be given a COVID-19 Antigen quick test. (15 minute result)
4. Child will be cleared to go to class with a negative test result.
5. Child will provide teacher their clearance pass from the health room for admission to class.

MSOS school antigen testing permission form: Link located on [beehively.com](https://www.beehively.com) home page and Mary, Star of the Sea website.

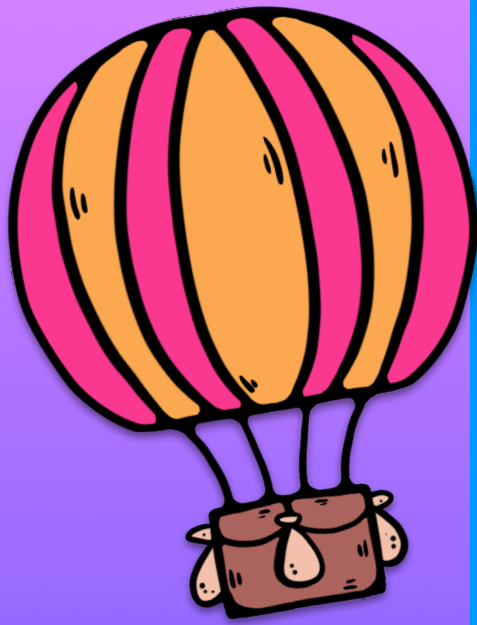
Parent/guardian must complete online permission form in advance to participate in school COVID-19 antigen testing.

COVID-19 potential contagious period begins: 48 hours prior to the start of the confirmed case's symptoms, or if they are asymptomatic, 48 hours prior to the date their test specimen was collected.

If your child receives a positive test result in the Test-To-Stay program: Parent/guardian will be notified and must pick up child from school immediately. See (Pg. 9) for return to school instructions.

Sibling(s) of confirmed positive student attending MSOS: Must go home. See Scenario 2 for Further instructions. (Pg.3)

Classmates in same homeroom: May continue to attend school with negative test results in Test-To-Stay program.



WHAT IF MY CHILD WILL BE TRAVELING OUT OF STATE?

SCENARIO 5.



MSOS TRAVEL POLICY OPTIONS FOR STUDENTS RETURNING TO SCHOOL FOLLOWING OUT OF STATE TRAVEL

- 1 May return to school the following day after arrival. Stay in school and take part in the **MSOS Test-To-Stay program**. Students will be given 2 or more rapid antigen tests in a 5 day period while continuing to attend school following the date of last contact. See (Pg.7)
 - 2 Quarantine at home for 5 days after returning to Oahu. (day of arrival back to Oahu is counted as day 0) no test required to return to school on the 6th calendar day.
- ★ Fill out the MSOS out of state travels form prior to traveling. Travel form link located on Beehively home page and Mary, Star of the Sea Website.
 - ★ Current State of Hawaii protocols for traveling take precedent. If required to quarantine by the state please notify the school.



WHAT IF MY CHILD TESTS POSITIVE FOR COVID-19?

SCENARIO 6.



YOUR CHILD HAS TESTED POSITIVE FOR COVID-19

★ Keep your child home and follow current Hawaii Department of Health protocols for quarantine/isolation. If your child tests positive at school parent/guardian will be notified and must pick up their child from school immediately.

★ Child may:

1 Return to school after 5 calendar days (day of positive test result is counted as day 0). Report to the school health room to take a school administered antigen test. A negative test result will allow child to return to school. A positive test result will require student to continue with an additional 5 calendar days of quarantine from school.

Or

2 Return to school after 10 days of quarantine from school with the last 24 hours symptom free.

★ See (Pg. 2) For school antigen testing information. Contact school nurse to schedule test date.

★ Sibling(s) of confirmed positive student attending MSOS must go home. See Scenario 2 for Further instructions. (Pg.3)