

MARY, STAR OF THE SEA

COVID-19 RETURN TO SCHOOL PROTOCOL

TABLE OF CONTENTS



CONTENTS



SCENARIO 1.
WHAT IF MY CHILD FEELS SICK?



SCENARIO 2.
WHAT IF SOMEONE IN OUR
HOUSE TESTS POSITIVE FOR
COVID-19?



SCENARIO 3.
WHAT IF MY CHILD IS
IDENTIFIED AS A CLOSE
CONTACT FOR COVID-19?



SCENARIO 4.
WHAT IF THERE IS A
COVID-19 POSITIVE
CASE IDENTIFIED IN MY
CHILD'S HOMEROOM



SCENARIO 5.
WHAT IF MY CHILD
WILL BE TRAVELING
OUT OF STATE?



SCENARIO 6.
WHAT IF MY CHILD TESTS
POSITIVE FOR COVID-19?



DEFINITIONS

WHAT IF MY CHILD FEELS SICK?

SCENARIO 1.



★ If your child has developed symptom(s) of COVID-19: Cough, difficulty breathing, fever >99.5 , sore throat, loss of taste / smell, headache, runny nose, congestion, muscle/body aches, chills, unusual fatigue, vomiting, stomachache, diarrhea, rash.

Your child may return to school once symptom(s) have improved; and no fever for 24 hours without the use of fever reducing medications. With one of the following options below.

- 1 Your child may return to school with a negative COVID-19 Antigen home test kit result. Parent guardian to provide emailed picture of negative test result prior to sending child back to school email school nurse at mvallesteros@starofthesea.org
Or
- 2 Your child may return to school and report to the health room before going to class for symptom check & to receive school administered antigen test. (See Definitions pg.7) Parent permission required.)
Or
- 3 Your child may return to school with a negative COVID-19 Antigen or PCR lab test result.
Or
- 4 Your child may return to school with a doctor's clearance.

Should symptoms(s) develop while at school: The school nurse will use clinical judgment on a case-by-case basis to determine if a student will be required to be sent home from school and/or be required to mask while at school.

Exempt: If your child has a medical history and/or known etiology of symptoms (e.g. allergy, asthma, ear infection) Please provide explanation on Absentee Report (google form link located on beehively home pg.) or email or call the school nurse. The school nurse will use clinical judgment on a case-by-case basis to determine if a student will require additional clearance.

WHAT IF SOMEONE IN OUR HOUSE TESTS POSITIVE FOR COVID-19?

SCENARIO 2.



Individuals who have ongoing close contact with a person with COVID-19 because they live in the same house **must** stay home in quarantine for 5 days **after** the person with COVID-19 is released from isolation. Example day 11 (Source: Hawaii Department of Health) Revised July 15th, 2022

★ Students who are **ABLE** to quarantine from the positive household member may return to school:

1 With a negative COVID-19 Antigen or PCR test. They will be required to mask for 10 days. Students will be given a rapid Antigen test between day 5-7 following the date of last contact while continuing to attend school. Contact school nurse to determine test date(s). (Parent permission required.)

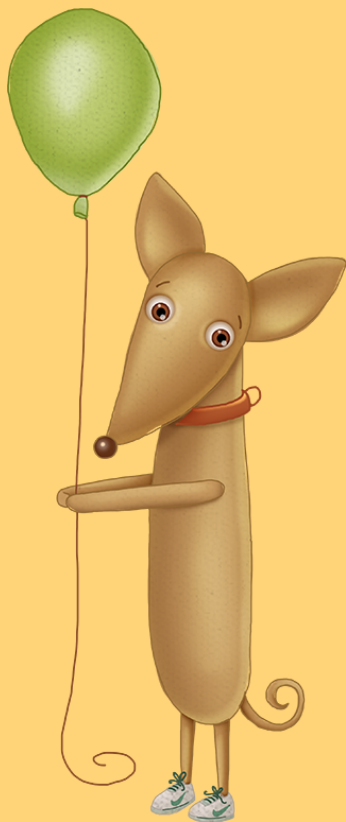
★ Students who are **UNABLE** to quarantine from the positive household member may return to school:

1 After completing quarantine (10 days) from the positive test date. Test date is day 0. No additional clearance required.

2 Students who are up to date on all COVID-19 vaccinations for their age group may return to school with a negative COVID-19 Antigen or PCR test. They will be required to mask for 10 days. Students will be given a rapid Antigen test between day 5-7 following the date of last contact while continuing to attend school. Contact school nurse to determine test date(s). (Parent permission required.)

WHAT IF MY CHILD IS IDENTIFIED AS A CLOSE CONTACT FOR COVID-19?

SCENARIO 3.



Unvaccinated Students:

1

Return to school on the 5th day following the date of close contact. Must report to the health room before going to class for symptom check & to receive school administered COVID-19 Antigen test. Contact the health room for test date(s).

Or

2

Return to school on or after the 5th day following the date of close contact. Provide COVID-19 Antigen or PCR lab or home test result. Test must be taken after 5 days following date of close contact.



Students who are up to date on all COVID-19 vaccinations for their age group:

1

Stay in school and take part in school Antigen testing while continuing to attend school following the date of last contact. Contact the health room to determine test date(s).

Or

2

Your child may return to school with a negative COVID-19 PCR or Antigen lab or home test result. First result provided prior to return & second result 5 days following date of CC.



All identified close contacts must mask when on school campus for 10 calendar days following date of close contact.



Student may complete a 10 day quarantine if they prefer not to test.



Pictures of Antigen home test kit results will be accepted. email to school nurse at mvallesteros@starofthesea.org

WHAT IF THERE ARE COVID-19 POSITIVE CASE(S) IDENTIFIED IN MY CHILDS HOMEROOM CLASS?

SCENARIO 4.



Students May:

1 Stay in school and will be required to mask while on campus for 10 calendar days following date of last contact. (Date of last contact is counted as day 0) Example 11 days

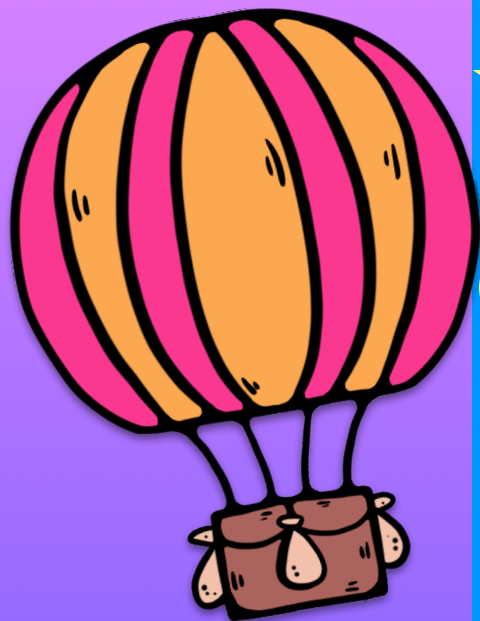
Or

2 May quarantine from school if desired for a 10 day period.

★ COVID-19 testing is encouraged upon initial notification of COVID-19 Positive case report and again after 5-6 days from last contact.

★ School will offer COVID-19 Antigen testing upon request only. Please contact the school nurse if interested in antigen testing. Email mvallesteros@starofthesea.org

★ Should symptoms develop please keep your child home and notify the Principal or school nurse for further instructions.



WHAT IF MY CHILD WILL BE TRAVELING OUT OF STATE?

SCENARIO 5.



Returning students must mask for 10 calendar days while on campus following out of state travel.

1

May return to school the following day after arrival. Stay in school and take part in MSOS Antigen testing. Students will be given one or more rapid antigen test(s) while continuing to attend school following travel. Contact school nurse to schedule testing.

OR

2

May return to school the following day after arrival. Provide the school with a negative PCR or Antigen test result prior to returning to school and provide a second test on the 5th or 6th day after return. (Picture of COVID-19 home test accepted) email to school nurse at mvallesteros@starofthesea.org

Or

3

Quarantine at home for 7 days after returning to Hawaii. (day of arrival back to Hawaii is counted as day 0) no test required to return to school.



Fill out the MSOS out of state travels form prior to traveling. Travel form link located on Beehively home page and Mary, Star of the Sea Website.



Current State of Hawaii protocols for traveling take precedent. If required to quarantine by the state please notify the school.



WHAT IF MY CHILD TESTS POSITIVE FOR COVID-19?

SCENARIO 6.



★ Keep your child home and follow current Hawaii Department of Health protocols for quarantine/isolation. If your child tests positive at school parent/guardian will be notified and must pick up their child from school immediately.

★ Student may return to school when all the following conditions are met:

1

- * It has been at least 5 calendar days from positive test date (day of positive test result is counted as day 0) and
- * 24 hours with no fever without the use of fever-reducing medication; and
- * Symptoms have improved; also
- * Must wear a well-fitting mask from day 6-10 while on school campus; and
- * Report to the school health room to take a school administered antigen test. A negative test result will allow child to return to school the same day. A positive test result will require student to continue with up to an additional 5 calendar days of quarantine from school.

Or

2

- Return to school after 10 days of quarantine from school with the last 24 hours fever free and symptoms have improved. No test required.

★ Sibling(s) of confirmed positive student attending MSOS must go home. See Scenario 2 (Pg.2) for Further instructions.

DEFINITIONS

School antigen testing & symptom(s) check. Contact school health room to determine & schedule test dates. Email school nurse: mvallesteros@starofthesea.org

1. Report to the health room upon arriving to campus by 7:30am prior to going to class.
2. School nurse will do a symptom check.
3. Child will be given an Antigen quick test. (15 minute result)
4. Child will be cleared to go to class with a negative test result.
5. Child will provide teacher their clearance pass from the health room for admission to class.

Permission form: Parent must complete school antigen testing permission form for child to take part in COVID-19 antigen testing. Link located on beehively.com home page and Mary, Star of the Sea website. School nurse can also email link by request.

If your child receives a positive test result: Parent/guardian will be notified and must pick up child from school immediately. See (Pg. 6) for return to school instructions.

Sibling(s) of confirmed positive student attending MSOS: Must go home. See Scenario 2 household positive for Further instructions. (Pg. 2)

COVID-19 potential contagious period: Begins 48 hours prior to the start of the confirmed case's symptoms, or if they are asymptomatic, 48 hours prior to the date their test specimen was collected.

Close contact: Being within 6 feet of a person with COVID-19 infection for a combined total of 15 minutes or more over a 24-hour period (regardless of mask use). Potential exposure period begins 48 hours prior to the start of the confirmed case's symptoms, or if they are asymptomatic; 48 hours prior to the date their test specimen was collected.

Close contact example: Your child attended a party over the weekend. A day later you are notified that the birthday child at the party has just tested positive for COVID-19. You are aware that your child was playing closely with this child at the party for over a 15 minute period. Monitor your child for symptoms and notify the school of Close contact.