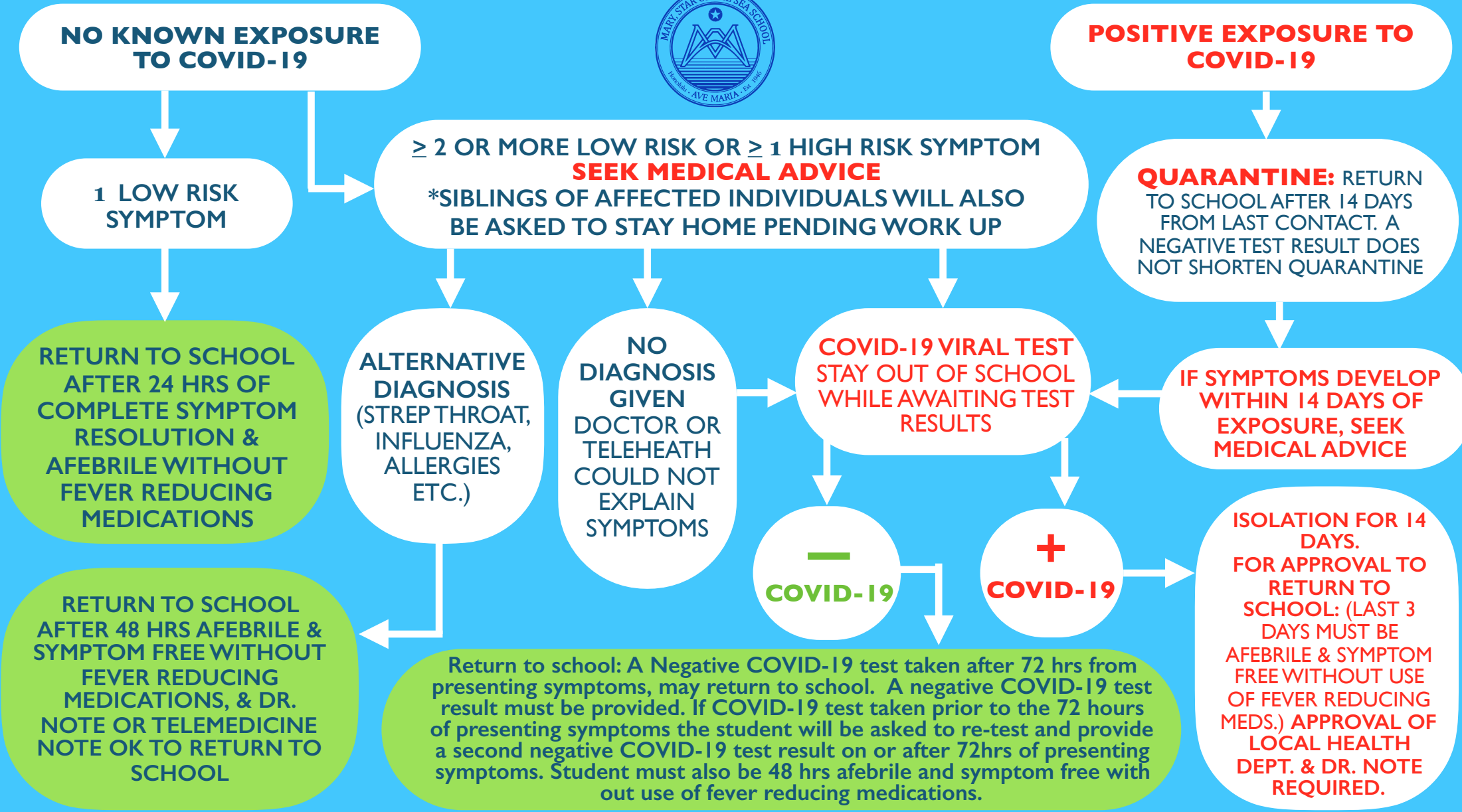


MARY, STAR OF THE SEA: RETURN TO SCHOOL DECISION TREE



HIGH RISK SYMPTOMS: Cough, difficulty breathing, fever ≥ 100.4 , sore throat, loss of taste / smell.

LOW RISK SYMPTOMS: Runny nose, congestion, muscle/body aches, headache, unusual fatigue, nausea/vomiting, diarrhea, rash, temp of $99.5-100.3$ for ≥ 15 min or longer, chills, red eyes irritation to the eyes.

POSITIVE EXPOSURE: Is a close contact exposure to an individual who child lives with, cares for, has recently spent time around at a distance of less than 6ft for ≥ 10 minutes, has had direct physical contact (touched, hugged or kissed shared eating or drinking utensils or was sneezed or coughed on directly.)